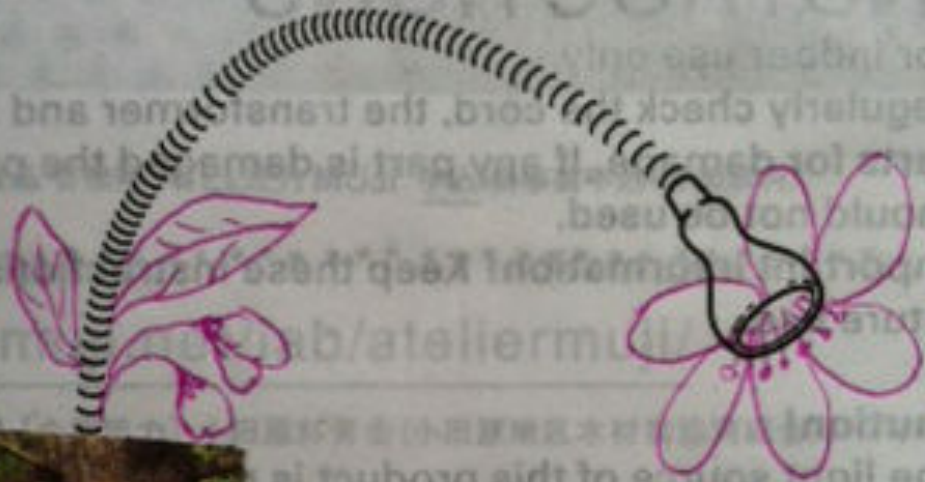


JANSJÖ

ENGLISH
FRANÇAIS
ESPAÑOL



無印良品



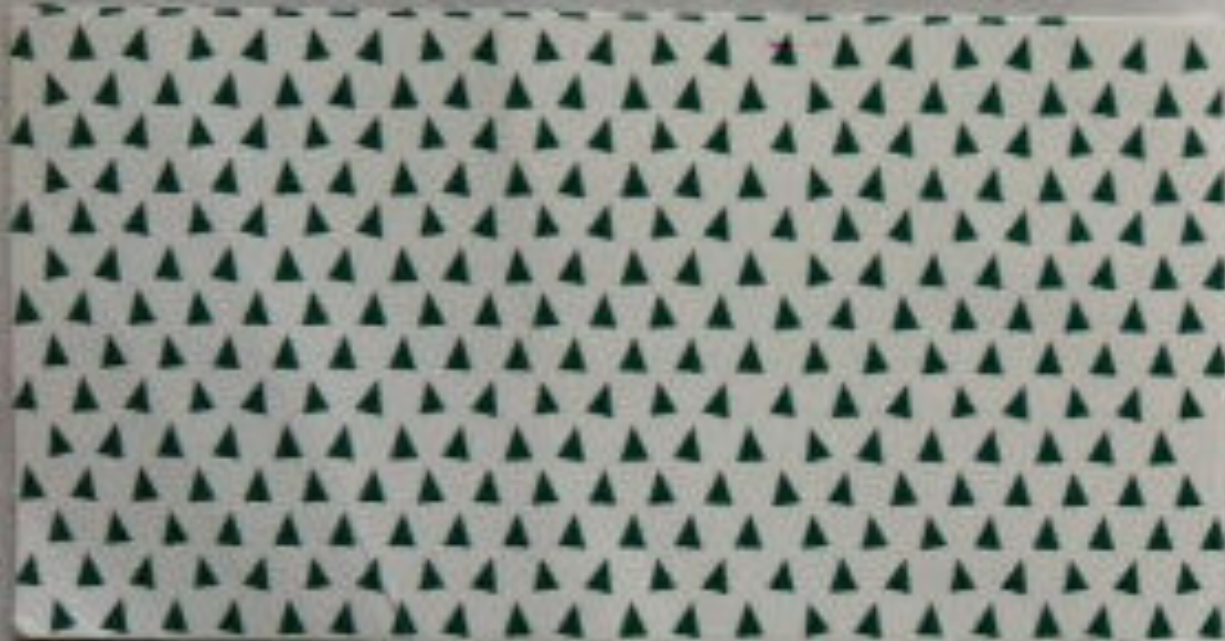
Design and Quality
IKEA of Sweden



ENGLISH

IMPORTANT SAFETY INSTRUCTIONS

For indoor use only.



Cleaning

Use a damp cloth, never a strong cleaning agent.





**SAVE THESE
INSTRUCTIONS**



CAUTION To reduce the risk of injury, use the correct method of use.



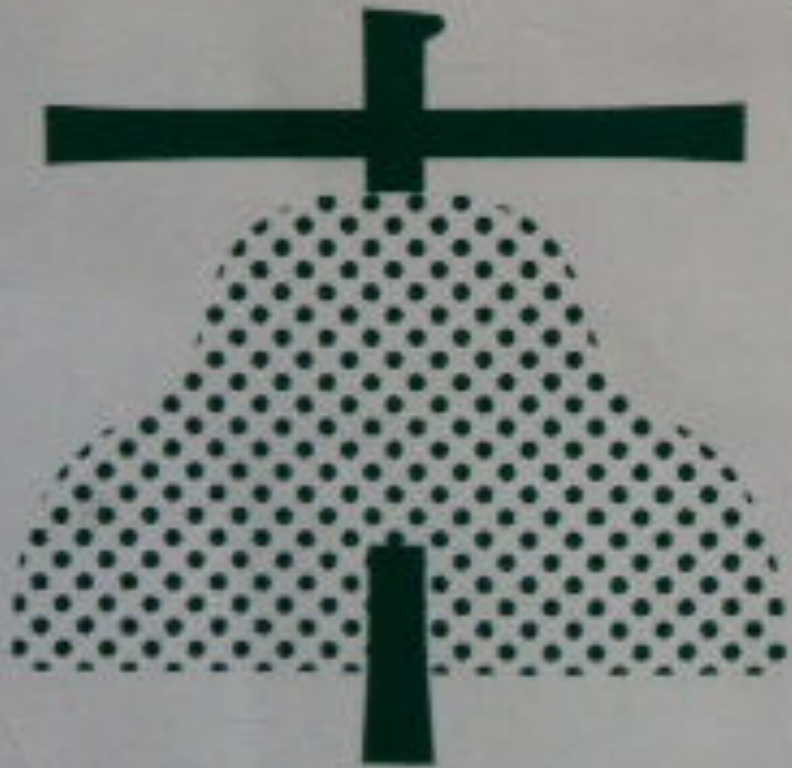
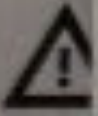
遊

外で本を読むこと



CONSERVER 森や木





198
6 8



*Forest is
our friend*





ENGLISH

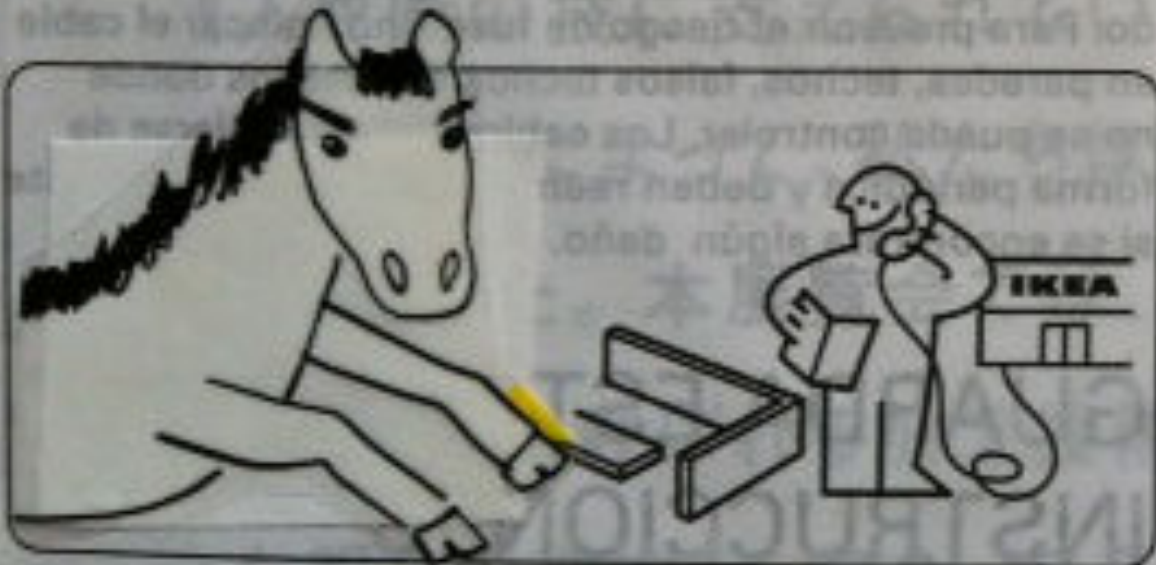
Different materials require different types of fittings.
Always choose screws and plugs that are specially
suited to the material.

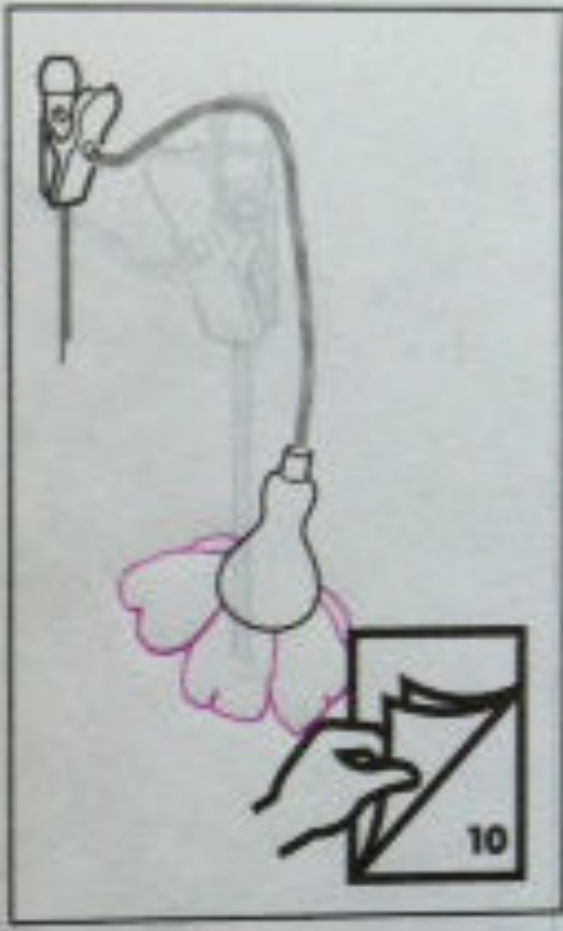
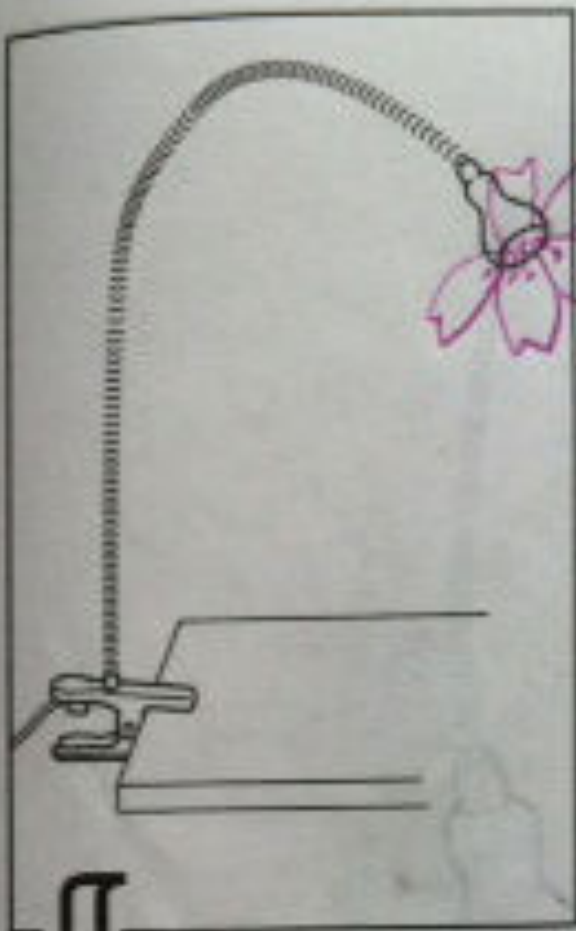
FRANÇAIS

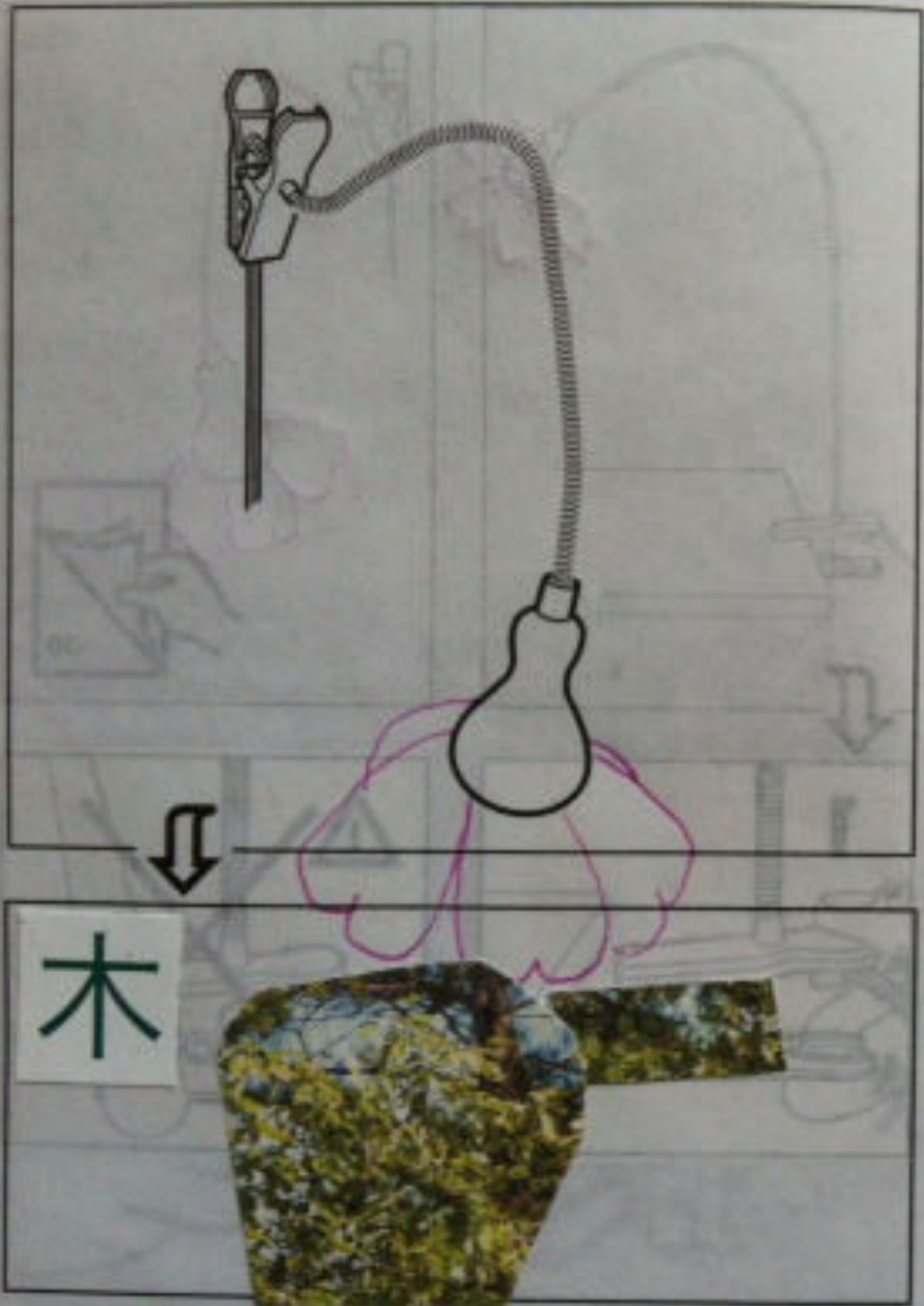
Le choix des vis dépend du matériau dans lequel elles
doivent être fixées. Utiliser des vis et chevilles adap-
tées au matériau du support.

ESPAÑOL

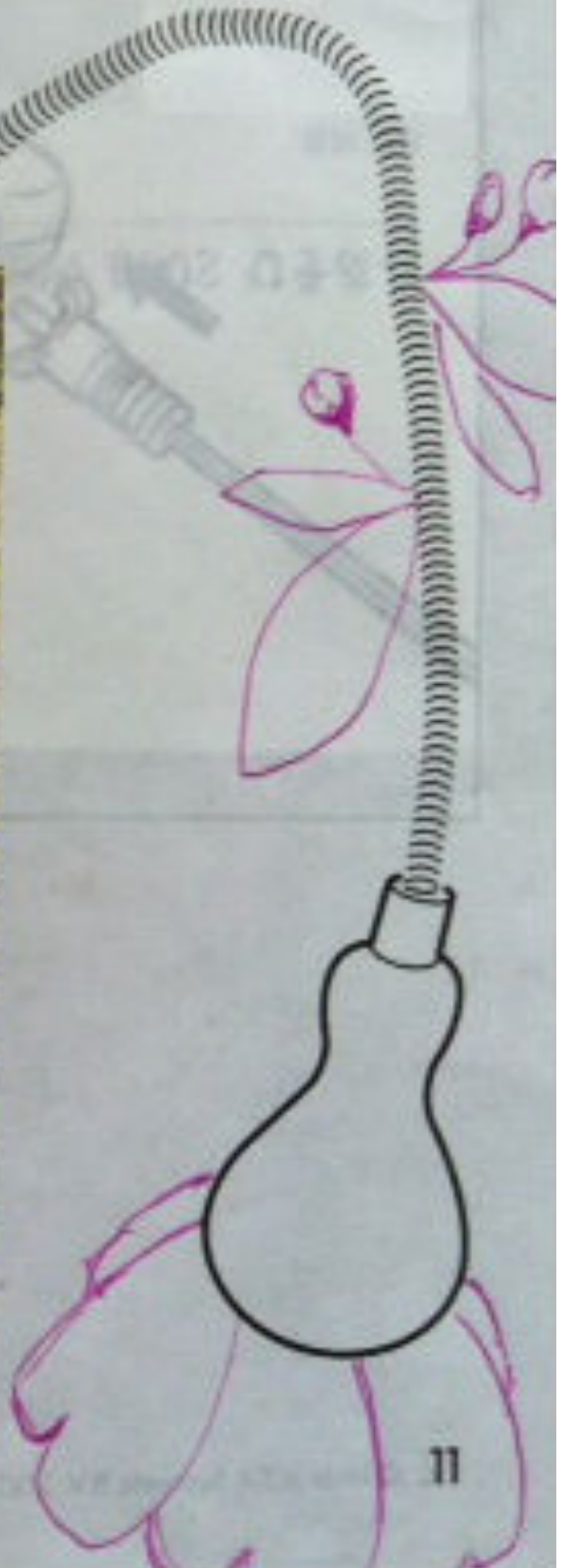
Diferentes materiales requieren diferentes clases de
herrajes. Recuerda que los tornillos y tacos que elijas
se deben adaptar al material en el que irán sujetos.







秣



木
林

